



# *Dewi Nusantara*

CRUISING ITINERARY 19

## **FLORES TO ALOR: ROUTE I**

MAUMERE BAY - ADONARA - LEMBATA - PANTAR - ALOR  
(MAUMERE TO MAUMERE)





MAUMERE BAY - ADONARA - LEMBATA - PANTAR - ALOR

DEWI NUSANTARA ITINERARIES

# FLORES TO ALOR: ROUTE I

MAUMERE BAY - ADONARA - LEMBATA - PANTAR - ALOR

*Dewi Nusantara*





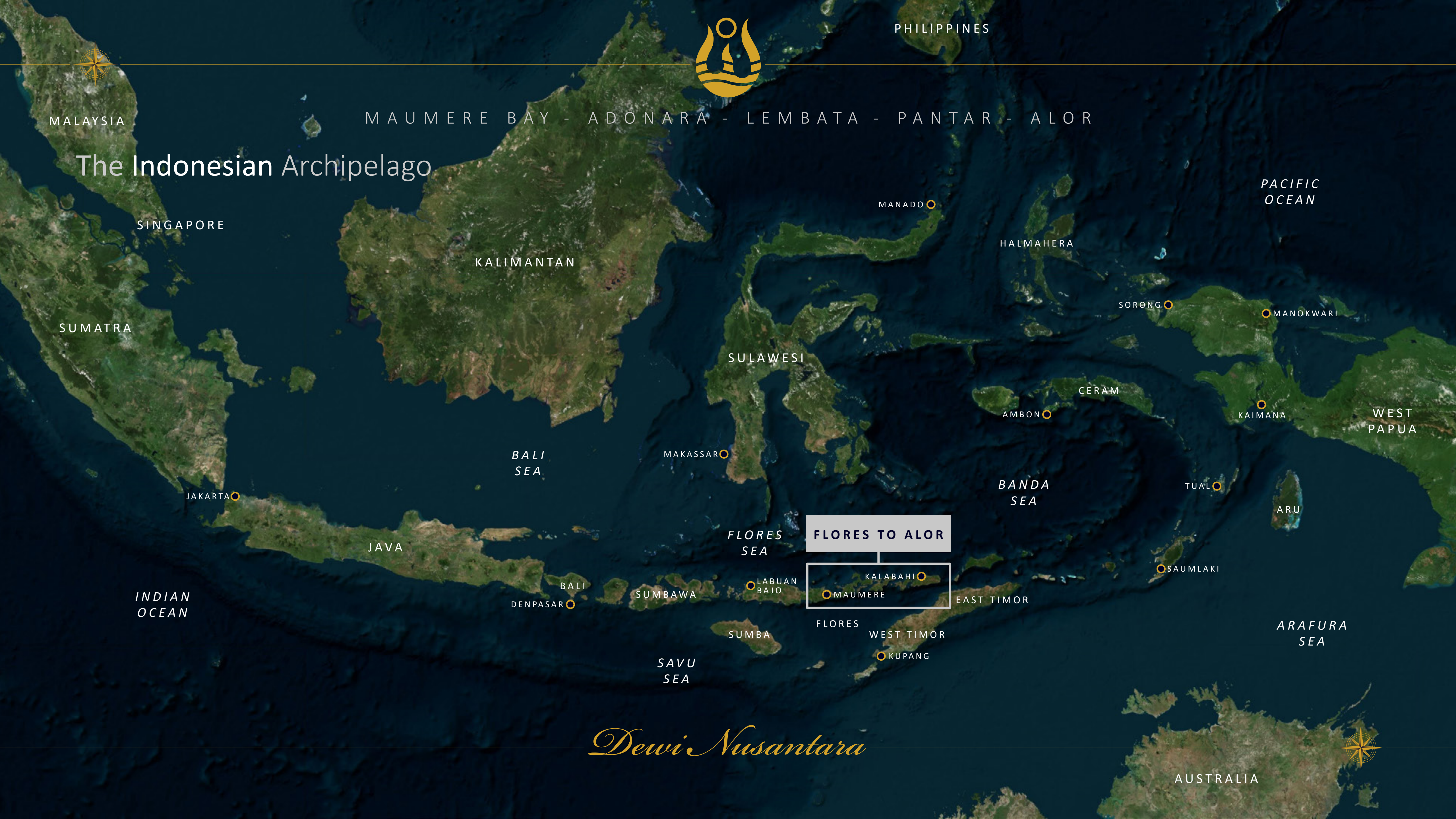


# The Indonesian Archipelago

MAUMERE BAY - ADONARA - LEMBATA - PANTAR - ALOR

FLORES TO ALOR

*Dewi Nusantara*







MAUMERE BAY - ADONARA - LEMBATA - PANTAR - ALOR

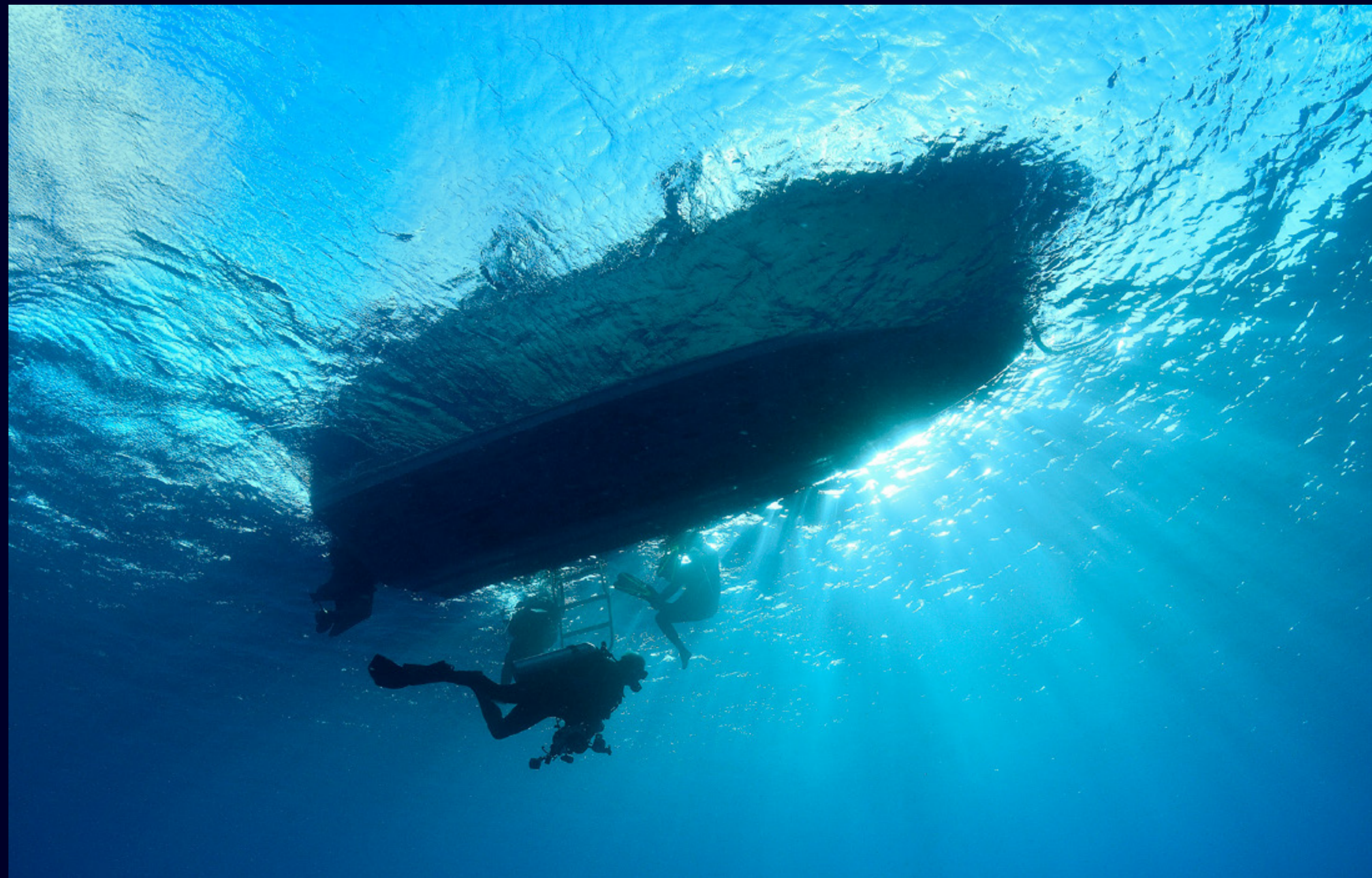
## Flores to Alor: Route I

Over twenty years ago, the team that still pioneers Dewi Nusantara's dive operations, embarked on a series of custom cruises that ventured beyond Komodo, pushing further east to explore the island chain stretching from Flores to Alor—deep into the heart of East Nusa Tenggara. What we discovered was nothing short of extraordinary: pristine reefs with endless visibility, teeming with vibrant marine life, and an array of rare underwater creatures that marine photographers can only dream of capturing.

Our underwater adventures were complemented by breathtaking topside scenery. Towering volcanoes, breaching whales, and playful dolphins provided a dramatic backdrop, while the warmth and hospitality of the local communities added a unique charm. The local people often delighted in diving into the water alongside us, eager to share in our discoveries. And this was just the beginning.

### A Distinctive Diving Experience

Each diving hotspot in Indonesia offers a distinct experience, both beneath the waves and on the surface. The reef structures, coral compositions, and marine species vary subtly from region to region. Marine life abundant in one area may be a rarity in another, and the Flores-to-Alor corridor is no exception. Along this route, divers encounter a diverse range of underwater environments: towering walls adorned with vibrant sea fans, bustling sea mounts, crystal-clear ledges, kaleidoscopic coral slopes, and sandy seabeds that serve as a haven for elusive macro life.



*Dewi Nusantara*







MAUMERE BAY - ADONARA - LEMBATA - PANTAR - ALOR



Some dive sites are truly one-of-a-kind. Clown Valley and Big Foot Bay in the Alor-Pantar Strait, for example, are adorned with vast carpets of anemones stretching as far as the eye can see, creating a surreal and mesmerizing underwater landscape.

### Encounters with Majestic Marine Life

The waterways surrounding these islands are home to an impressive array of large marine species rarely seen in other destinations. Divers have the chance to encounter oceanic sunfish, thresher sharks, hammerheads, and massive dogtooth tuna. Other sites frequently host Napoleon wrasse, whitetip, blacktip, and grey reef sharks, along with colossal stingrays and formations of eagle and mobula rays.

Dolphins are a near-constant presence, often racing toward our boat to play in the bow waves. Meanwhile, the deep channels separating the islands serve as migration routes for larger cetaceans. Sightings of surfacing whales—sometimes even the mighty blue or fin species—are not uncommon, adding to the region's allure.

### A Hidden Paradise for Macro Enthusiasts

While many underwater macro photography enthusiasts are familiar with the Lembeh Strait in Sulawesi, fewer have explored Kalabahi Inlet, Teluk Lebaleba, Teluk Waihinga, or Beangabang Bay—hidden gems that rival Lembeh in biodiversity. These untouched regions offer encounters with some of the rarest and most cryptic marine species, without the crowds disturbing the delicate ecosystem. Despite our extensive explorations, we have merely scratched the surface—or more accurately, the seabed—of these incredible sites.

World-class macro diving requires precise environmental conditions: gently sloping sandy or silty substrates, mild tidal currents, and ideally, the presence of freshwater inflows from







MAUMERE BAY - ADONARA - LEMBATA - PANTAR - ALOR

streams or rivers. When these elements converge, the results are extraordinary, and such environments are abundant in the sheltered coves, bays, and inlets throughout the region.

## Dramatic Topside Landscapes

Beyond the underwater marvels, the topside scenery along this route is equally breathtaking. White sandy beaches, sparkling blue waters, lush green forests, and sun-scorched savannahs set the stage for exploration. However, the most striking features are the region's numerous active volcanoes.

During our early exploratory cruises, we visited one such volcano, isolated in the open sea. As we approached at dusk, we were treated to the awe-inspiring sight of molten rock cascading down its slopes into the ocean, accompanied by thunderous explosions and clouds of ash billowing into the sky. Naturally, we couldn't resist the urge to dive nearby, where we uncovered even more spectacular underwater sites to add to our essential and ever-growing list.

## Cultural Encounters and Local Traditions

Despite its remote location, East Nusa Tenggara is home to welcoming and vibrant communities. The people of the Alor-Pantar Strait, for example, are renowned for their intricate Ikat weaving. They skillfully navigate strong currents in small traditional boats to offer their beautifully crafted textiles to visitors.

Live entertainment is often an unexpected delight—whether in the form of entire schools of children singing from the shore or paddling out in dugout canoes to greet arriving boats with smiles and laughter. These genuine interactions add depth and warmth to the journey, making every visit truly memorable.



*Dewi Nusantara*







MAUMERE BAY - ADONARA - LEMBATA - PANTAR - ALOR



## Sustainable Fishing and Pristine Reefs

The health of the coral reefs in this region owes much to the sustainable fishing practices of the local communities. Traditional basket traps and selective spearfishing methods are still widely used, ensuring minimal impact on the marine ecosystem. It is not uncommon to encounter a spearfisher gliding effortlessly through the water as you complete a safety stop—many are more than happy to pose for a photo.

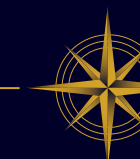
Diving along this quiet, untouched island chain is nothing short of spectacular. Crystal-clear visibility, exhilarating drift dives, vibrant coral gardens, and exceptional critter sites all combine to create one of the most biologically diverse and breathtaking marine ecosystems on the planet. Whether drawn by the thrill of big animal encounters, the intrigue of macro photography, or the sheer beauty of this unspoiled paradise, one thing is certain—East Nusa Tenggara is a destination that leaves an indelible mark on all who explore it.

## Get On-Board with Dewi Nusantara

The team that conceived and constructed Dewi Nusantara in 2007 was among the original group of early pioneers that purpose-built liveaboard yachts to explore the seas of the Indonesian archipelago in the mid-90s. With thousands of miles already under her keel, the Goddess of the Archipelago continues to gracefully glide over the azure water that makes this country so unique.

Begin your next scuba adventure on board the Indonesian archipelago's premier liveaboard and experience the very best that Indonesia has to offer, along with Dewi Nusantara's outstanding service, exceptional facilities, and her highly experienced crew.

*Dewi Nusantara*







MAUMERE BAY - ADONARA - LEMBATA - PANTAR - ALOR

## Destinations: Flores to Alor - Route I

- [Cruise Route ↗](#)
- [Maumere Bay ↗](#)
- [Tanjung Gedong ↗](#)
- [The Ipet Islands ↗](#)
- [Wai Wowang ↗](#)
- [Rusa, Marissa & Kambing ↗](#)
- [Beangabang Bay ↗](#)
- [The Alor-Pantar Strait ↗](#)
- [The Kalabahi Inlet ↗](#)
- [Waiyinga & Lewaling ↗](#)
- [Pomana & Gosong Bone ↗](#)
- [Cruise Notes ↗](#)

Key: ↗ = To destination. ↶ = Back to this page







KOMBA  
VOLCANO



MAUMERE BAY - ADONARA - LEMBATA - PANTAR - ALOR



Cruise Route: Flores to Alor - Route I (Maumere to Maumere)

*Dewi Nusantara*





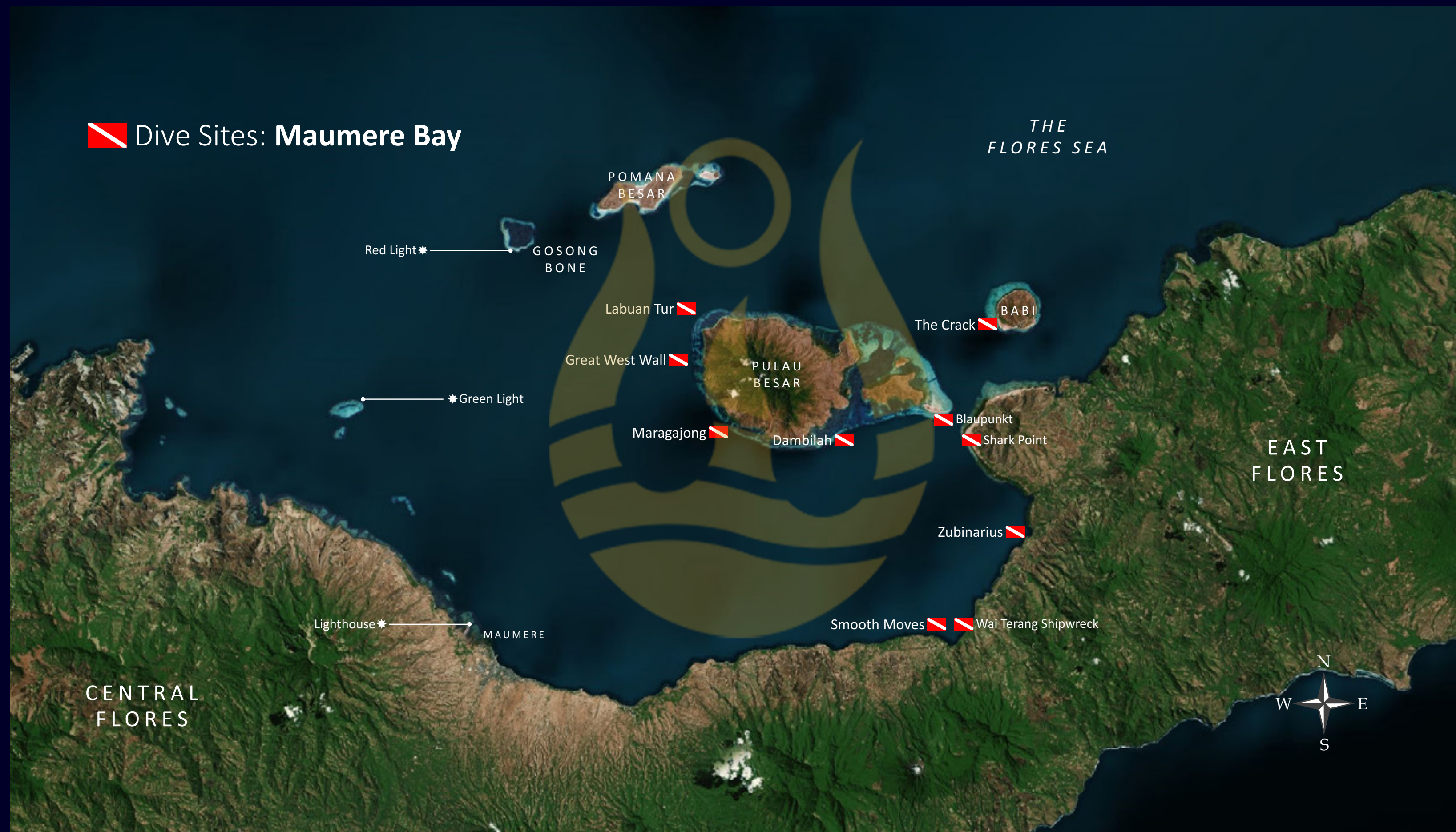


MAUMERE BAY - ADONARA - LEMBATA - PANTAR - ALOR

## Maumere Bay

Diving in Maumere Bay, located on the north Flores coastline, is a must-see destination for underwater enthusiasts. Known for its rich marine biodiversity, vibrant coral reefs, and magnificent muck dives, Maumere offers a more off-the-beaten-path experience compared to some of Indonesia's more well-known dive destinations. The bay, which was greatly affected by a massive earthquake and tsunami in 1992, has since seen significant reef recovery, making it a fascinating example of how a marine ecosystem can thrive after such dramatic and damaging cataclysmic events.

One of the biggest features of Maumere Bay is its diverse dive sites, catering to all levels of divers. From shallow coral gardens teeming with macro life to deeper walls and slopes where pelagic species roam, the bay has something for everyone. Sites around Pulau Besar, Dambilah, the low-lying sandy island of Pangabatang, and the Flores mainland feature stunning coral formations and a wide range of marine species, including reef sharks, turtles,







## MAUMERE BAY - ADONARA - LEMBATA - PANTAR - ALOR



rays, and a host of macro subjects. The wide open spaces of the bay are also used as a playground and feeding area by a number of whale and dolphin species too.

Maumere's critter diving scene is also a highlight, making it an excellent spot for macro photographers. The volcanic black sand slopes along the Flores coastline are home to rare critters such as frogfish, flamboyant cuttlefish, and ghost pipefish. Night dives here are particularly rewarding, revealing bioluminescent plankton and nocturnal marine life in action. Close by to some of these wonderful critter sites at Wai Terang is the wreck of a Japanese freighter from World War II, adding a sense of mystery and history to the underwater adventure.

Beyond the water, Maumere offers a rich cultural experience. There is the opportunity to include visits to traditional villages at Sikka on the Flores mainland, where travellers can witness local weaving techniques and experience Flores' warm hospitality. Further afield are the astonishing three coloured volcano crater lakes at Keli Mutu.

With its laid-back charm, spectacular diving, and cultural richness, Maumere Bay is a perfect destination for divers looking to explore Indonesia's lesser-known underwater treasures.





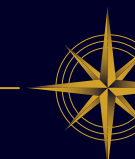


MAUMERE BAY - ADONARA - LEMBATA - PANTAR - ALOR

## Tanjung Gedong

Tanjung Gedong is the name given to a massive rocky promontory at the top of what is known as the Scorpions Tail, on the north-west side of the Bunga Peninsula in east Flores. The peninsula comprises the major part of this northeastern section of the island, with Gedong jutting out into the Flores Sea, surrounded by the sea on three sides.

One of the highlights of diving at Tanjung Gedong is the chance to explore its dramatic underwater topography, including coral-covered rock formations and gentle slopes that lead to deeper waters. The dive sites are combined around the south-west and north-east corners of the headland, starting at the south end with a particularly dramatic soft coral mini-wall that continues on to a 400-metre-long rubble slope dotted with coral heads. The slope leads to a current trap at the north corner before finishing over the reefs of the northern-facing section of the headland. During a west-to-east rising







MAUMERE BAY - ADONARA - LEMBATA - PANTAR - ALOR

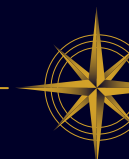


tide, it is possible to drift all the way around the headland and take in all of the separate sites. At these times, the currents swirling around these two corners attract a mass of marine life. These sites are often visited by some big fish, with sharks, mantas, groupers, Napoleon wrasses, and dogtooth tunas spotted on many dives.

Macro photographers will also find plenty to capture, as the area is home to an array of colourful nudibranchs, shrimp, and other small marine creatures. The mini wall on the south-west side is sheer and covered with very colourful and abundant soft coral growth, a good place to find pygmy seahorses, skeleton shrimp, and many other smaller critters.

Whether you're looking to drift along the reef or take a closer look at the intricate marine biodiversity during a dive after dark, Tanjung Gedong offers a variety of different and adventurous diving experiences.

*Dewi Nusantara*







MAUMERE BAY - ADONARA - LEMBATA - PANTAR - ALOR

## The Ipet Islands

The Ipet anchorage, a collection of pretty low-lying islands, surface-breaking shallow reefs, and white sandbars, lies close to the northern end of the Boling Strait that separates the islands of Adonara and Lembata. The seascape is calm and well protected, making it a big favourite with cruising captains, and there is a lot to do and see around the islands and reefs, and the scenic surroundings are greatly enhanced by the imposing panorama of several active volcanoes dominating the skyline.

There are some terrific dive sites around the edges of the islands and waterways, particularly on the north side that faces the open sea. This area features some splendid reefs that shimmer with colourful corals and streams of marine life.

The signature site of the area is the Ipet Barrier Ridge. There is a shallow coral ridge that stretches for over 1,000 metres parallel to the shallow fringing reef of Ipet Island. The ridge drops onto a spectacular wall and deep ledge on the seaward side and features a surprisingly high number of



*Dewi Nusantara*







## MAUMERE BAY - ADONARA - LEMBATA - PANTAR - ALOR



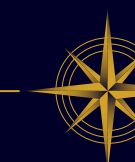
different shark species, marble rays, and schools of barracudas that patrol the ledges, edges, and walls.

Other sites include a drift through the narrow channel between Konawehe and the larger island of Adonara Island and the spectacular reef slopes of the Boling Strait that showcase all that the underwater world of Nusa Tenggara has to offer here.

The mangrove-lined waterways between the island group lend themselves well to excellent kayaking expeditions. The brilliantly colourful coral reefs extend away from the small islands into deeper water at a comfortable snorkelling depth.

The entire island group is a great place for surface water-based sports like kayaking, paddleboarding, and snorkelling, due to the expansive shallow reefs, intricate shorelines and waterways, and the protected nature of the islands. Central to the shallow coral reefs and mangrove-lined islands is a long white sandbar that becomes visible before and after high tide, and around the edges of Ipet Island, thousands of huge fruit bats like to spend their days hanging upside down in the trees. In the late afternoon, it is possible to get close to the tree line and hear them screeching and flapping shortly before they make the journey over to the forests and farms of Adonara to begin their nighttime feasting.

Ipet has become a popular permanent cruising fixture, offering a wide range of exciting activities under and on the water.







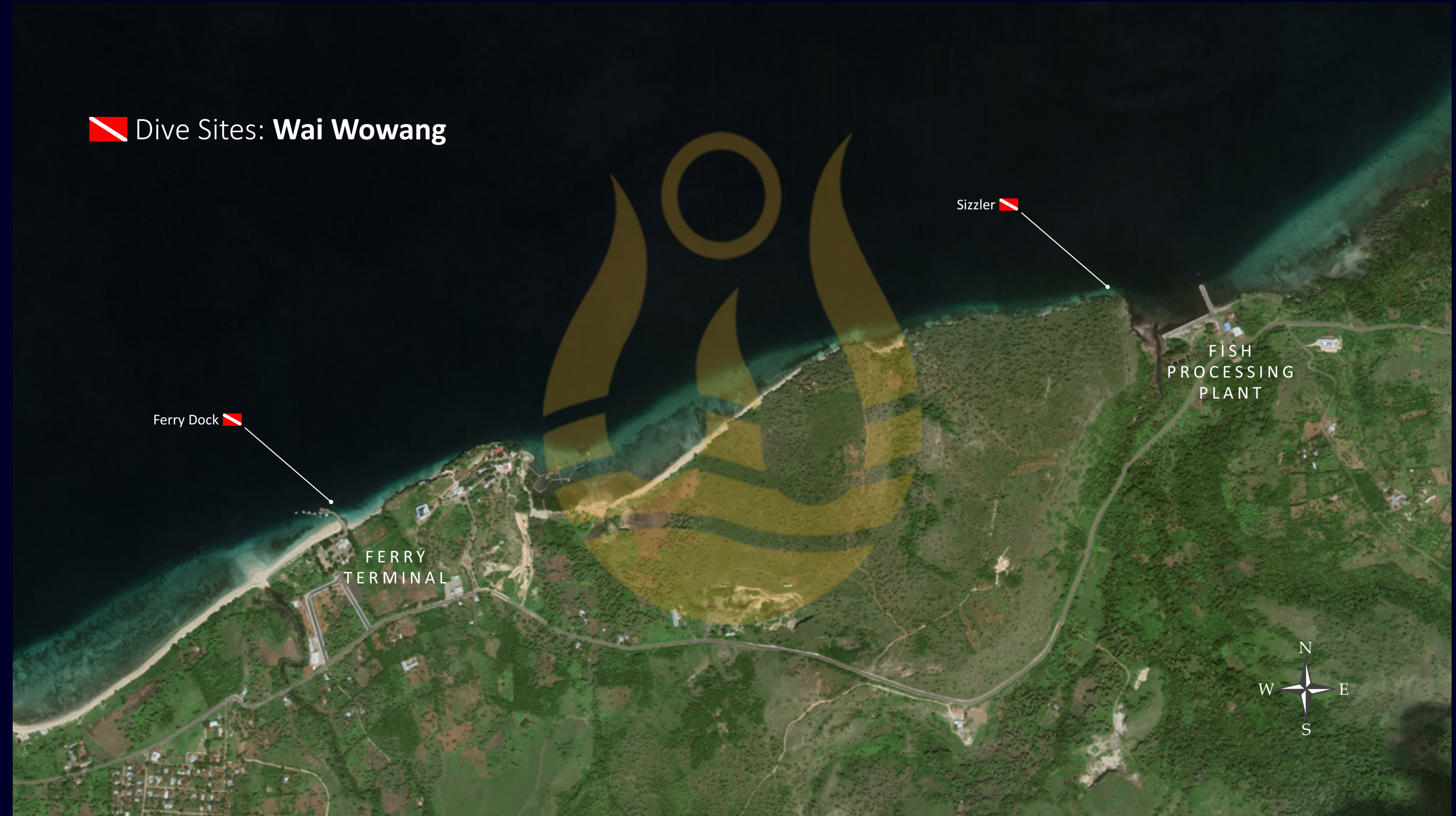
MAUMERE BAY - ADONARA - LEMBATA - PANTAR - ALOR

## Wai Wowang

Lembata is a breathtaking island, with its administrative and commercial heart in the bustling town of Lewoleba, which sits along the north-facing shores of Leba Leba Bay. Just a short distance down the coast lies Wai Wowang, a quiet anchorage and a hotspot for divers. This haven for macro enthusiasts takes its name from a small sandy bay, a freshwater stream (“Wai”) that feeds into it, and the remnants of a long-abandoned fish processing plant on the mainland.

Without a doubt, scuba diving is the favourite activity at this anchorage. The coastline boasts some of the region’s finest critter- or “muck”-diving sites, offering an unparalleled opportunity to encounter rare and mesmerising marine life. A unique blend of freshwater runoff, a sparse reef, a gravel-and-sand seabed, and gentle tidal currents creates the perfect conditions for an extraordinary underwater ecosystem to flourish.

Although discovered only recently, the dive sites along this stretch of coastline have quickly gained







MAUMERE BAY - ADONARA - LEMBATA - PANTAR - ALOR



a reputation as some of the best for spotting elusive marine species. Among the most renowned sites are Sizzler and Ferry Dock, along with the extensive reef systems that flank them. The underwater terrain is literally teeming with marine treasures.

For those with a keen eye, the waters here reveal an astonishing array of rare and exotic species. Ghost pipefish in a dazzling variety of forms hide among the corals, while all three species of the elusive Rhinopias scorpionfish lurk around the small coral heads and in the sand, waiting to be discovered. Beyond these stars of the show, an endless parade of extraordinary critters makes every dive an extraordinary exploration.

For adventurers looking to stretch their legs after a day beneath the waves, the surrounding landscape offers rolling hills with scenic trekking routes that meander through leafy lanes along the shoreline. Meanwhile, a visit to Lewoleba town promises a warm and lively welcome from the friendly, spirited locals- always eager to share their culture and hospitality with those who pass through.







MAUMERE BAY - ADONARA - LEMBATA - PANTAR - ALOR

## Rusa, Marissa & Kambing

The strait between Lembata and Pantar is one of Indonesia's most breathtaking marine thoroughfares. Rising from its depths are the islands of Marissa, Rusa, and the smaller Kambing, reminiscent of the famed Komodo National Park.

Tides funnel nutrient-rich waters between the Flores and Banda Seas to the north and the Savu Sea to the south, creating strong currents that sustain thriving coral reefs and an abundance of marine life. These powerful flows have shaped numerous dive sites, where currents attract diverse marine species. The waters around Rusa, Marissa, and Kambing teem with hunting predators, from sharks and rays to schooling tunas, vibrant reef fish, and even elusive mola mola, making for a spectacular underwater display.

On Rusa's southwest side, the tiny islet of Watu Balu rises from the sea, home to hundreds of seabirds and surrounded by a dazzling steep coral reef - one of the region's top dive sites. South of Kambing, Batu Bawa offers an exhilarating and







## MAUMERE BAY - ADONARA - LEMBATA - PANTAR - ALOR



largely unexplored dive. This vast site features sheer coral-covered walls, swim-throughs, and canyons teeming with marine life. At its heart lies a massive underwater arch, home to several large nurse sharks.

Just over a mile east of Kambing, the larger island of Pantar boasts another dramatic dive site - Big Willi, named after the mountain at the southwest headland. Sheer rock walls, deep crevices, and the promise of large marine visitors make it an unforgettable experience. Further along Pantar's coast, Alkatraz offers a dive reminiscent of Komodo's legendary Horseshoe Bay. What first appears as a small site opens into a sprawling underwater landscape of rocky ledges, black coral bushes, sea fan-adorned walls, and boulders teeming with surgeonfish, sweetlips, and an array of fascinating macro life.

For those seeking adventure above the waves, Kambing is the crown jewel of the area. Just two kilometers across at its widest point, it features a rugged coastline and a stunning northeast cove. Though smaller than the beaches on nearby islands, its pristine white sands and easy accessibility make it a perfect starting point for exploring the island's wild and untracked terrain.







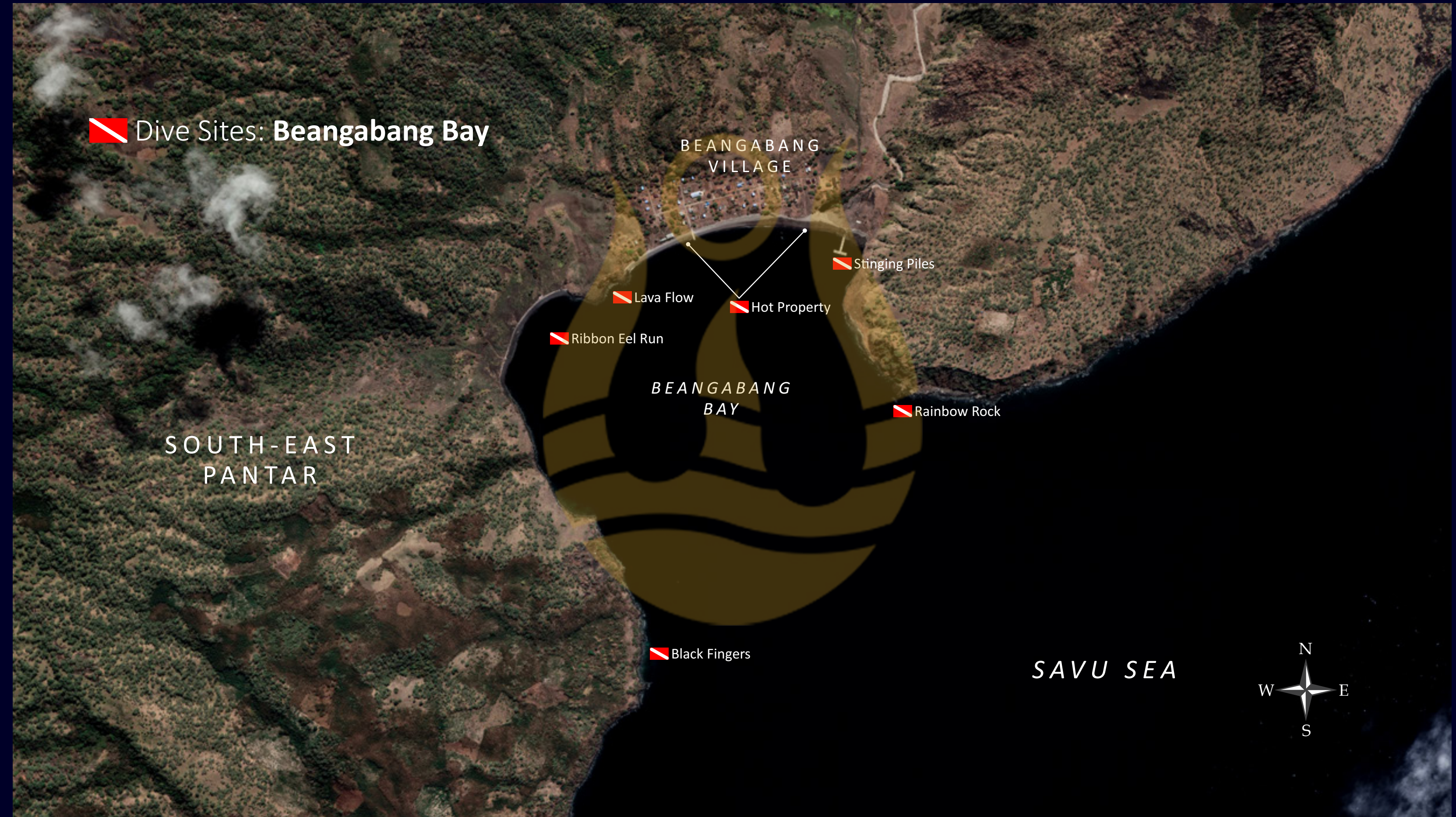
MAUMERE BAY - ADONARA - LEMBATA - PANTAR - ALOR

## Beangabang Bay

While the outer reefs of Beangabang Bay boast vibrant corals and an array of marine life - from delicate pygmy seahorses to elusive thresher sharks - the real magic lies beneath the sandy, gravel-strewn seabed of the bay's interior. A legendary hotspot for underwater photographers and macro enthusiasts, Beangabang has long been one of Indonesia's top destinations for discovering the ocean's strangest and most fascinating creatures. Constantly shifting with the tides, the dive sites here evolve week by week, revealing new surprises as unusual critters emerge from the sand.

As a general rule, great critter diving sites share three essential ingredients:

- A dynamic seabed. A mix of sand, gravel, coral rubble, seaweed, and scattered marine habitats provides shelter for an astonishing variety of camouflaged species.
- A gentle current. Even a mild flow of water carries nutrients across the bay, sustaining its ecosystem. Beangabang experiences a cyclical







MAUMERE BAY - ADONARA - LEMBATA - PANTAR - ALOR



current that sweeps around its curving shoreline, creating the perfect conditions for marine life to thrive.

- A freshwater source. A trickling stream or hidden spring is often all it takes to enhance biodiversity. Beangabang takes this a step further - its freshwater supply is naturally heated by volcanic activity.

While it's unclear whether the warm water contributes to the bay's abundance of rare and bizarre species, one thing is certain - Beangabang is a magnet for the extraordinary. Its reputation draws dive boats and yachts carrying eager photographers, many of whom extend their stay for days, mesmerized by the ever-changing spectacle beneath the surface of the Savu Sea.





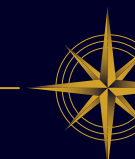


MAUMERE BAY - ADONARA - LEMBATA - PANTAR - ALOR

## The Alor-Pantar Strait

The strait between Alor and Pantar, the final two islands along the East Nusa Tenggara chain, is a premier destination for experienced scuba divers seeking unspoiled marine biodiversity. This remote and ecologically rich region is home to some of the most pristine dive sites in the world, featuring vibrant coral reefs, dramatic underwater topography, and an exceptional variety of marine life. The powerful currents that course through the strait carry nutrient-dense waters from the deep, attracting large pelagic species and sustaining a thriving marine ecosystem.

Enhancing the region's dynamic underwater environment, the waterway is interspersed with several smaller islands - Buaya, Ternate, Pura, Kumba, and Treweg further south. These landforms influence tidal movements, creating a complex interplay of currents that give rise to a diverse range of dive conditions, from tranquil coral gardens to exhilarating drift dives.







MAUMERE BAY - ADONARA - LEMBATA - PANTAR - ALOR



One of the most remarkable aspects of diving in the Alor-Pantar Strait is the extraordinary health and diversity of its coral reefs. These ecosystems host an abundance of marine species, including schools of barracuda, trevallies, and reef sharks. Macro enthusiasts can observe rare and elusive creatures such as frogfish, pygmy seahorses, and rhinopias scorpionfish, all thriving within this biologically rich environment.

Beyond its exceptional reef systems, the strait offers unparalleled opportunities for encounters with larger marine species. Divers frequently witness pods of dolphins, while seasonal migrations bring sightings of orcas and even blue whales, further underscoring the region's significance as a marine biodiversity hotspot.

The Alor-Pantar Strait is also home to a number of renowned dive sites. Locations such as The Cathedral, Kelatetek, Crucifixion Point, Babylon, Cave Point, and Tanjung Muna attract oceanic sunfish, eagle rays, hammerhead sharks, and thresher sharks, providing a world-class diving experience. Among the most unique sites is Clown Valley on Pura Island, where divers can observe an expansive seabed entirely covered by swaying anemones - a rare and mesmerising sight.



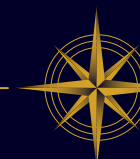




## MAUMERE BAY - ADONARA - LEMBATA - PANTAR - ALOR

In addition to its ecological wonders, the Alor-Pantar region offers a rich cultural experience. Local communities, particularly those on Pura Island, have maintained traditional fishing and boat-building practices for generations. Visitors may have the opportunity to observe skilled freedivers utilising handcrafted wooden goggles, a testament to the enduring maritime traditions of the region.

Combining breathtaking underwater biodiversity with cultural heritage and unspoiled natural beauty, the Alor-Pantar Strait presents an exceptional diving experience. Its remote location and dynamic marine environment make it a truly unparalleled destination for divers seeking adventure beyond conventional dive sites.





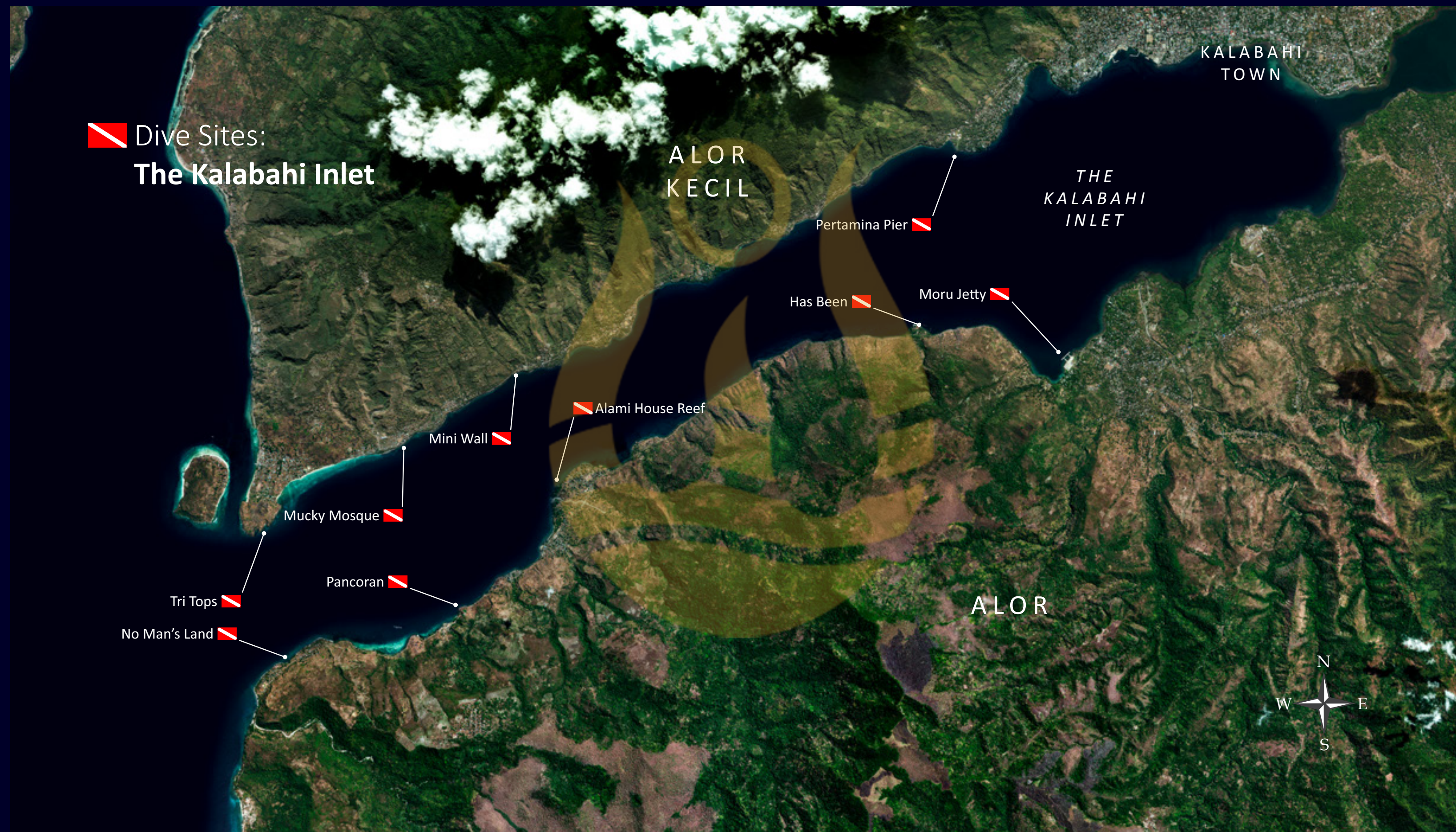


MAUMERE BAY - ADONARA - LEMBATA - PANTAR - ALOR

## The Kalabahi Inlet

Indonesia is home to some of the world's most extraordinary muck and critter diving destinations, making it a must-visit for enthusiasts of bizarre and fascinating marine life. While the Lembeh Strait is where muck diving first gained fame, this unique style of diving has since spread across Indonesia, the Philippines, and Papua New Guinea. Among the top locations to encounter the weird and wonderful creatures of the seabed, Alor - and more specifically the Kalabahi Inlet - stands out as one of the very best waiting to be explored.

Stretching over nine nautical miles from the Alor-Pantar Strait to Kalabahi Town, the Kalabahi Inlet is a long, winding waterway that separates the Alor mainland from the northern headland known as Alor Kecil. Along its shores, divers will find an impressive collection of critter-filled dive sites, each offering incredible biodiversity. While visibility tends to decrease deeper into the inlet, the reward is well worth it, as these nutrient-rich waters are teeming with marine life.





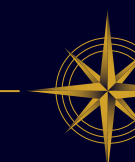


MAUMERE BAY - ADONARA - LEMBATA - PANTAR - ALOR



The sites here share many of the same characteristics as legendary muck diving spots like Lembeh in Sulawesi and Laha in Ambon - gently sloping gravel or sand bottoms dotted with coral heads, small habitats, a touch of current, and the occasional influx of freshwater from springs, streams, or rivers. These conditions create the perfect environment for an astonishing array of marine life, from the beautiful to the bizarre. Underwater photographers and critter enthusiasts will be thrilled to find an incredible selection of species, and with the help of Dewi's eagle-eyed dive guides - world renowned for their ability to spot even the most elusive creatures - checking off a wish list of must-see critters can happen in just a few dives.

While the well-known sites in Kalabahi Inlet are packed with marine treasures, the adventure doesn't end there. Many more dive spots remain unexplored, offering endless opportunities for discovery. Whether you're a seasoned macro photographer or a curious diver eager to encounter nature's strangest underwater inhabitants, Kalabahi Inlet promises an unforgettable muck diving experience.





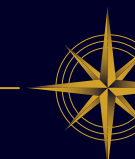


MAUMERE BAY - ADONARA - LEMBATA - PANTAR - ALOR

## Waihinga & Lewaling

Nestled beneath the commanding presence of the still-active Mt. Lewotolo volcano, the twin bays of Waihinga and Lewaling carve deep into the rugged northern coastline of Lembata, unveiling a spectacular underwater landscape rich in marine biodiversity. These bays are home to an array of renowned dive sites, each offering its own distinct allure - from dramatic wall dives to intricate ledges and sandy alcoves teeming with macro life, ideal for underwater photography enthusiasts.

The most celebrated dive sites are found along a striking drop-off that delineates the edge of an expansive shallow reef. Stretching over four kilometres from the northeastern tip of the Bacatan Peninsula on Waihinga's eastern side, this reef extends along the west-facing coastline into the bay, providing divers with an abundance of entry points. The reef's sharp boundary descends into a sheer abyss, where coral-encrusted ledges, shadowy caverns, and bustling fish habitats create an exhilarating underwater experience. In these







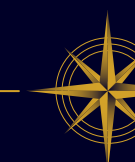
MAUMERE BAY - ADONARA - LEMBATA - PANTAR - ALOR



depths, vibrant marine life flourishes, from dense schools of reef fish to elusive pelagic species gliding effortlessly through the deep blue.

Deeper into the bays, the winding coastline reveals yet another dimension of its marine treasures. These sheltered waters serve as a haven for macro divers, offering the chance to observe a fascinating array of small marine creatures concealed within the sand and coral crevices. Nearby, a thriving seamount adjacent to a working pearl farm provides an additional, and different, dive site, attracting large schools of fish and the occasional passing predator.

Beyond its exceptional diving opportunities, this destination holds an even more extraordinary secret - their waters occasionally play host to the largest creature on Earth, the magnificent blue whale. On rare and awe-inspiring occasions, small groups of these gentle giants can be seen gathering within the bay, a sight that leaves even the most experienced divers in speechless wonder. For those eager to delve deeper into the mysteries of these majestic mammals, the village of Waipukang on the western shore features a beautifully preserved skeleton of a blue whale, displayed in a dedicated exhibit - a poignant reminder of both nature's grandeur and fragility.







## Pomana & Gosong Bone

Located just 15 nautical miles north of Maumere Harbour, this collection of dive sites is among the finest in the region, offering breathtaking underwater landscapes and rich biodiversity. The Pomana Besar and Kecil island group stand in contrast to the nearby Gosong Bone atoll, with distinct topside features. However, beneath the surface, both locations share remarkable similarities, characterized by vibrant, shallow reef tops that give way to dramatic drop-offs into the deep waters of Maumere Bay.

Divers can explore stunning wall dives adorned with towering barrel sponges, delicate sea fans, and intricate coral formations. The 1992 earthquake, while causing some damage to the bedrock, also reshaped the reefs and walls, creating an intricate network of cracks and crevices that have since become thriving habitats for a variety of marine life. These natural formations provide shelter for an array of reef fish, crustaceans, and invertebrates, making each dive an exciting exploration of hidden underwater worlds.







MAUMERE BAY - ADONARA - LEMBATA - PANTAR - ALOR



The interplay between the shallow reefs and the deep ocean creates unique currents that act as natural gathering points for marine species. These nutrient-rich waters attract schools of pelagic fish, including tuna, trevallies, and barracudas, while eagle rays and even reef sharks are occasional visitors. Meanwhile, the coral-covered flats and vertical walls are a macro diver's paradise, teeming with elusive critters such as pygmy seahorses and nudibranchs, - just a few of the treasures that make Indonesia one of the world's top diving destinations.

Whether you're drawn to the thrill of drifting along dramatic drop-offs or the excitement of spotting rare marine creatures, these dive sites promise an unforgettable underwater adventure.







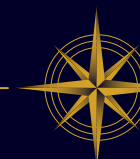
MAUMERE BAY - ADONARA - LEMBATA - PANTAR - ALOR

## Cruise Notes

- **Flexible Itineraries:** Our cruise routes are intentionally adaptable. Throughout the journey, the captain and cruise director continuously assess sea conditions, weather, and tides to ensure the best possible experience. Guest preferences for specific dive sites are always considered whenever feasible.
- **More Than Is Listed:** The locations featured in these itineraries represent only a portion of what's possible. Numerous additional anchorages and activity options are available along the way, making each voyage truly unique.
- **Simplified for Clarity:** The destinations shown in our presentations are not necessarily listed in the order they will be visited. They are organized for clarity and to help guests visualize the overall routing.
- **Extended Stays:** If a particular anchorage offers exceptional experiences, guests may opt to linger a bit longer. The captain and cruise director have the flexibility to accommodate such preferences, provided they align with the overall cruise schedule.
- **Overnight Passages:** To maximize daylight hours at our most spectacular destinations, longer transits between anchorages are typically conducted overnight.
- **Escape the Crowds:** With the exception of embarkation and disembarkation points, our itineraries are carefully crafted to avoid congested areas and busy commercial ports, allowing for a more tranquil and immersive experience.
- **Beyond the Dive:** Many of our anchorages offer more than just diving and snorkelling. Guests can enjoy kayaking, stand-up paddleboarding, and occasional visits to local villages and cultural sites — adding even more richness to the journey.



*Dewi Nusantara*







# *Dewi Nusantara*

G O D D E S S   O F   T H E   A R C H I P E L A G O

## FLORES TO ALOR: ROUTE I

[www.dewi-nusantara.com](http://www.dewi-nusantara.com) : [sales@dewi-nusantara.com](mailto:sales@dewi-nusantara.com)

Designed, written and produced by Garry Bevan

Dewi Nusantara: Flores to Alor - Route I. April 2025. (Maumere to Maumere)

© PT Dewi Nusantara/CTDL Ltd. © Ultimate Indonesia

10/04/25 (19)

