



Dewi Nusantara

CRUISING ITINERARY 13

RAJA AMPAT - MISOOL & SOUTH-WEST HALMAHERA

MISOOL - PISANG ISLAND - ORANG KAYA - THE PANTINTI STRAIT - MAKIAN
(SORONG TO TERNATE)



MISOOL - PISANG ISLAND - ORANG KAYA - THE PANTINTI STRAIT - MAKIAN

DEWI NUSANTARA ITINERARIES

RAJA AMPAT - MISOOL & SOUTH-WEST HALMAHERA

MISOOL - PISANG ISLAND - ORANG KAYA - THE PANTINTI STRAIT - MAKIAN

Dewi Nusantara





PHILIPPINES

MALAYSIA

MISOOL - PISANG ISLAND - ORANG KAYA - THE PANTINTI STRAIT - MAKIAN

The Indonesian Archipelago

PACIFIC OCEAN

RAJA AMPAT (MISOOL) & SW HALMAHERA

SINGAPORE

KALIMANTAN

MANADO

TERNATE

HALMAHERA

SORONG

MANOKWARI

SUMATRA

SULAWESI

CERAM

AMBON

KAIMANA

WEST PAPUA

MAKASSAR

BANDA SEA

TUAL

ARU

JAKARTA

JAVA

SAUMLAKI

INDIAN OCEAN

BALI

DENPASAR

SUMBAWA

LABUAN BAJO

MAUMERE

KALABAHI

EAST TIMOR

SUMBA

FLORES

WEST TIMOR

KUPANG

Dewi Nusantara

AUSTRALIA





MISOO L - PISANG ISLAND - ORANG KAYA - THE PANTINTI STRAIT - MAKIAN

Misool & South-West Halmahera

Dewi Nusantara will embark on three consecutive cruises that will explore two exceptional regions of the Indonesian archipelago: Misool and Halmahera. These itineraries are totally different from each another, and follow completely different routes. This presentation covers the first trip, Part I, which visits the Misool region of Raja Ampat before making a crossing to explore and dive the sites of south-west Halmahera.

Misool

Misool is the most southerly of the Four Kings. The islands that stretch out into the Ceram Sea from Misool's south-east shoreline form a location that avid scuba divers dream about and feature some of the most iconic dive sites to be found anywhere on the planet.

This unbelievably scenic area covers close to 2,500 square kilometres and features eye-popping dive sites at every turn. There are spectacular underwater experiences here for every level of diver. These include caves and walls along the northern line and numerous small rocky islets connected by marine ridges in the south. Everywhere, colourful corals combine with an astounding array of marine life to make diving here an unmissable experience.



Dewi Nusantara





MISOOL - PISANG ISLAND - ORANG KAYA - THE PANTINTI STRAIT - MAKIAN



South-West Halmahera

The marine biodiversity of Halmahera is also exceptional, and its pristine coral reefs offer exceptional scuba diving and snorkelling; it is a secret gem with so much still to be discovered. Visitors will have the chance to experience some of the best coral gardens that Indonesia has to offer. Dive sites range from ridges, pinnacles, caverns, swim-throughs, muck, and ancient volcanoes, creating a multitude of diverse marine experiences.

Get On-Board with Dewi Nusantara

The team that conceived and constructed Dewi Nusantara in 2007 was among the original group of early pioneers that purpose-built liveaboard yachts to explore the seas of the Indonesian archipelago in the mid-90s. With thousands of miles already under her keel, the Goddess of the Archipelago continues to gracefully glide over the azure water that makes this country so unique.

Begin your next scuba adventure on board the Indonesian archipelago's premier liveaboard and experience the very best that Indonesia has to offer, along with Dewi Nusantara's outstanding service, exceptional facilities, and her highly experienced crew.

Dewi Nusantara





MISOOL - PISANG ISLAND - ORANG KAYA - THE PANTINTI STRAIT - MAKIAN

Destinations: Misool & South-West Halmahera

[Cruise Route](#) ↗

[Balbulol](#) ↗

[Daram](#) ↗

[Fiabacet & Boo](#) ↗

[Wayil](#) ↗

[Jef Pele, Lili & Kepotsol](#) ↗

[Nampale](#) ↗

[Pisang](#) ↗

[Orang Kaya](#) ↗

[Ganone](#) ↗

[The Pantinti Strait](#) ↗

[Makian](#) ↗

[Cruise Notes](#) ↗

Key: ↗ = To destination. ↶ = Back to this page





MISOOL - PISANG ISLAND - ORANG KAYA - THE PANTINTI STRAIT - MAKIAN

Cruise Route:
Misool & South-West Halmahera



SULAWESI

THE
MALUKU
SEA

THE
CERAM
SEA

THE
HALMAHERA
SEA

THE
PACIFIC
OCEAN

WEST
PAPUA

THE
ARAFURA
SEA

Dewi Nusantara





MISOOL - PISANG ISLAND - ORANG KAYA - THE PANTINTI STRAIT - MAKIAN

Balbulol

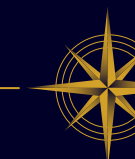
There are some fantastic dive sites both inside and outside the Balbulol Island Group, as well as around the Sagof Islands, a short distance further east. The sites offer multi-peaked seamounts, karst islands with undercuts, deep caves, ledges, spectacular reefs, and walls. At times, thick swarms of baitfish collect around this stunning marine architecture. With a little luck, it's frequently possible to see pelagics on the hunt, chasing these tiny fish in spectacular acrobatic fashion.

The north-east corner of Balbulol and two small islets on the east side of the Sagof Group are home to the majority of the popular sites. However, there is plenty of scope for exploration. Seamounts and reefs that rise close to the surface are spread across the seascape.

In addition, there are several lesser-known but excellent sites around the Epfian Group. This is another collection of small islands located only two and a half nautical miles east of the Sagof Group.



 Dive Sites: **Balbulol & Sagof**





MISOOL - PISANG ISLAND - ORANG KAYA - THE PANTINTI STRAIT - MAKIAN

Daram

The large island of Daram marks the easternmost boundary of the Misool region. The vast majority of the dive sites are not located around the island itself, but rather a short distance to the north-west. They are undoubtedly some of the most astonishing and colourful in the entire area.

Small collections of karst islets, located along the eastern end of a long island line that extends away from the east side of Misool, are the focal point for most of the site. Many of them boast incredibly abundant coral reefs and jaw-dropping topography. They are also home to so much marine life that, at times, it defies description.

The anchorages and sites are vulnerable to adverse sea and weather conditions due to their remote location. However, if the weather and sea conditions are favourable, the diving here is some of the very best that Raja Ampat has to offer. In addition, there are numerous opportunities to find many more new sites around these iconic rocky islands and ridges.





MISOOL - PISANG ISLAND - ORANG KAYA - THE PANTINTI STRAIT - MAKIAN

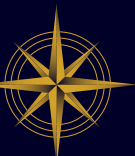
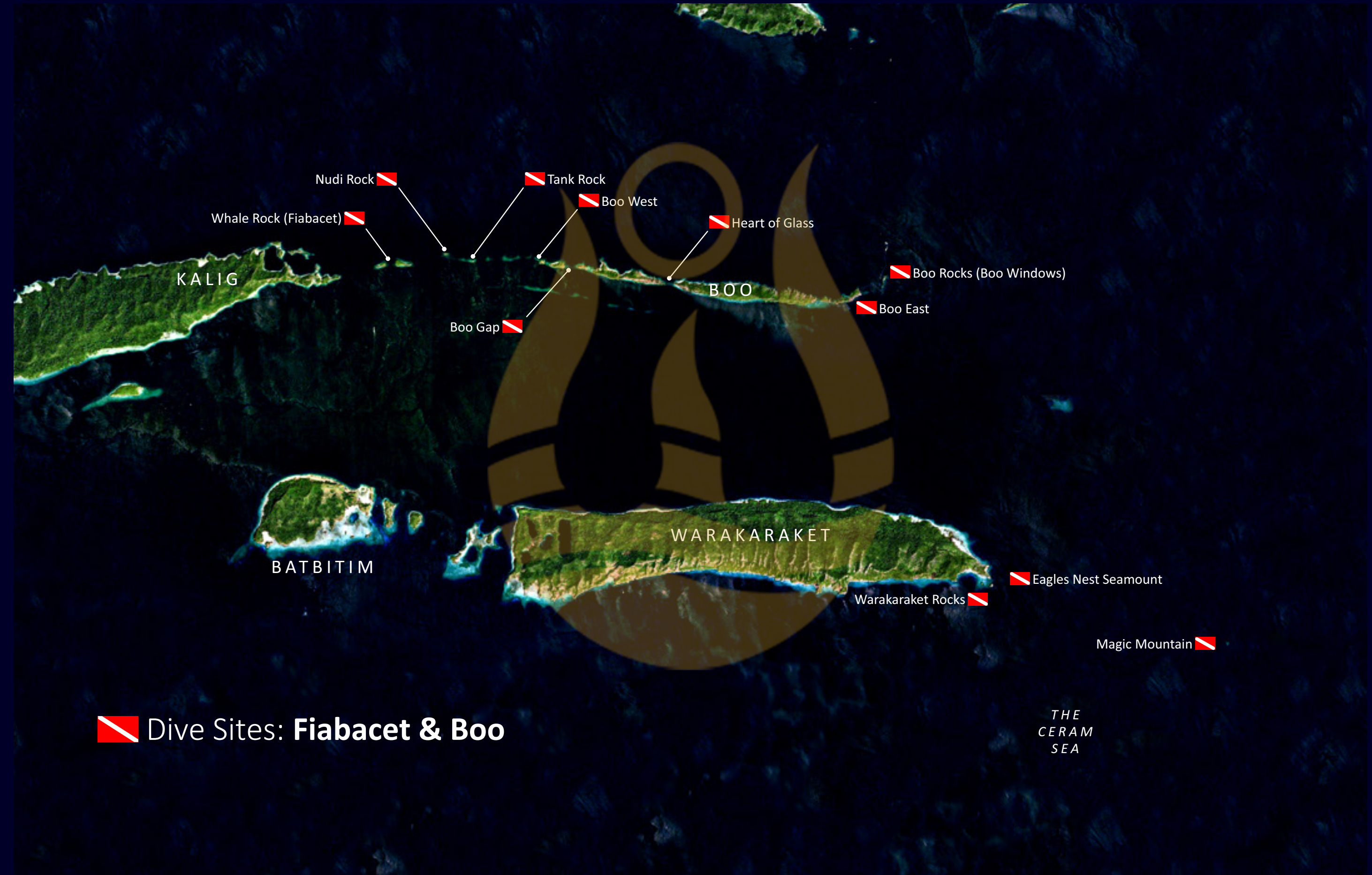
Fiabacet & Boo

The dive sites in and around Fiabacet and Boo are quite honestly some of the very finest that Raja Ampat, Indonesia, or even the planet has to offer.

The south side's deep ocean floor rises to a marine topography that features a labyrinth of interconnected ridges and seamounts. These act as filters for the nutrient-rich currents flowing up and over the complex seascape, causing the vibrant reefs to explode in a riot of colour and form.

The quality of the numerous sites is incredible. The dives showcase some of the most impressive numbers of schooling fish, swarms of small reef fish, and dazzlingly colourful corals anywhere. At times, the dense clouds of schooling fish obscure the larger predators patrolling behind them. Visiting divers frequently spot grey, white-tip, and black-tip reef sharks, as well as many other powerful predators such as dog-tooth tunas, Spanish mackerel, giant trevally, and acrobatic mobula rays, scything through this massive feast of baitfish.

Karst limestone rocks, as well as the corners and coasts of the larger islands of Boo and Kalig, serve as the focal points for most of the sites. Currents and upwellings from the Ceram Sea to the south wash over these areas, which bring nutrients up from deeper water, sustaining the topographic reefs and marine life in the area.





MISOOL - PISANG ISLAND - ORANG KAYA - THE PANTINTI STRAIT - MAKIAN

Wayil

The Wayil dive sites are mostly clustered around the western end of Wayilbatan Island. Comprising multi-peaked seamounts, karst island ridges, and exciting passages, they all feature abundant coral growth and a wealth of both pelagic and reef-dwelling marine life.

At Wayil, there is something for every level of diver. These include easy and pretty reef sites, majestic open-water seamounts, and gentle drift dives that flow down some of the most otherworldly marine seascapes imaginable.

One of the most popular sites is "The Four Kings." This incredible underwater experience takes place in open water, west of the anchorages, where an astonishing four-peaked seamount rises from the deep sea floor. This massive rocky marine structure acts as a magnet for all manner of marine life, large and small.





MISOOL - PISANG ISLAND - ORANG KAYA - THE PANTINTI STRAIT - MAKIAN

Jef Pele, Lili & Kepotsol

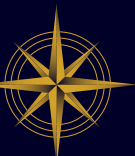
A short distance further west from Wayil and Fiabacet is the large island of Jef Pele, as well as the nearby Waaf, Lili, and Kepotsol island groups. These anchorages are a little more off the beaten track, and in turn feature some excellent diving opportunities.

The north-western edge of Jef Pele is home to Kaleidoscope Ridge, the anchorage's signature site. This is a fine example of Raja Ampat's underwater world, with a dizzying array of corals and marine life, both large and small. This impressive coral-covered ridge's incredible underwater architecture combines with a deeper seamount, attracting some of the larger animals that inhabit the abundant reefs and seas of the Misool region. Jef Pele's complex coastline, as well as the numerous offshore islands further south, allow for more dive site exploration.

The sites at Lili and Kepotsol, just under two nautical miles north of the Jef Pele shoreline, share the same amazing marine life and coral characteristics as those around the more well-known anchorages. The scope for new discoveries is considerable, especially in the Kofani group, situated between Lili and Kepotsol.



 Dive Sites: **Jef Pele, Lili & Kepotsol**



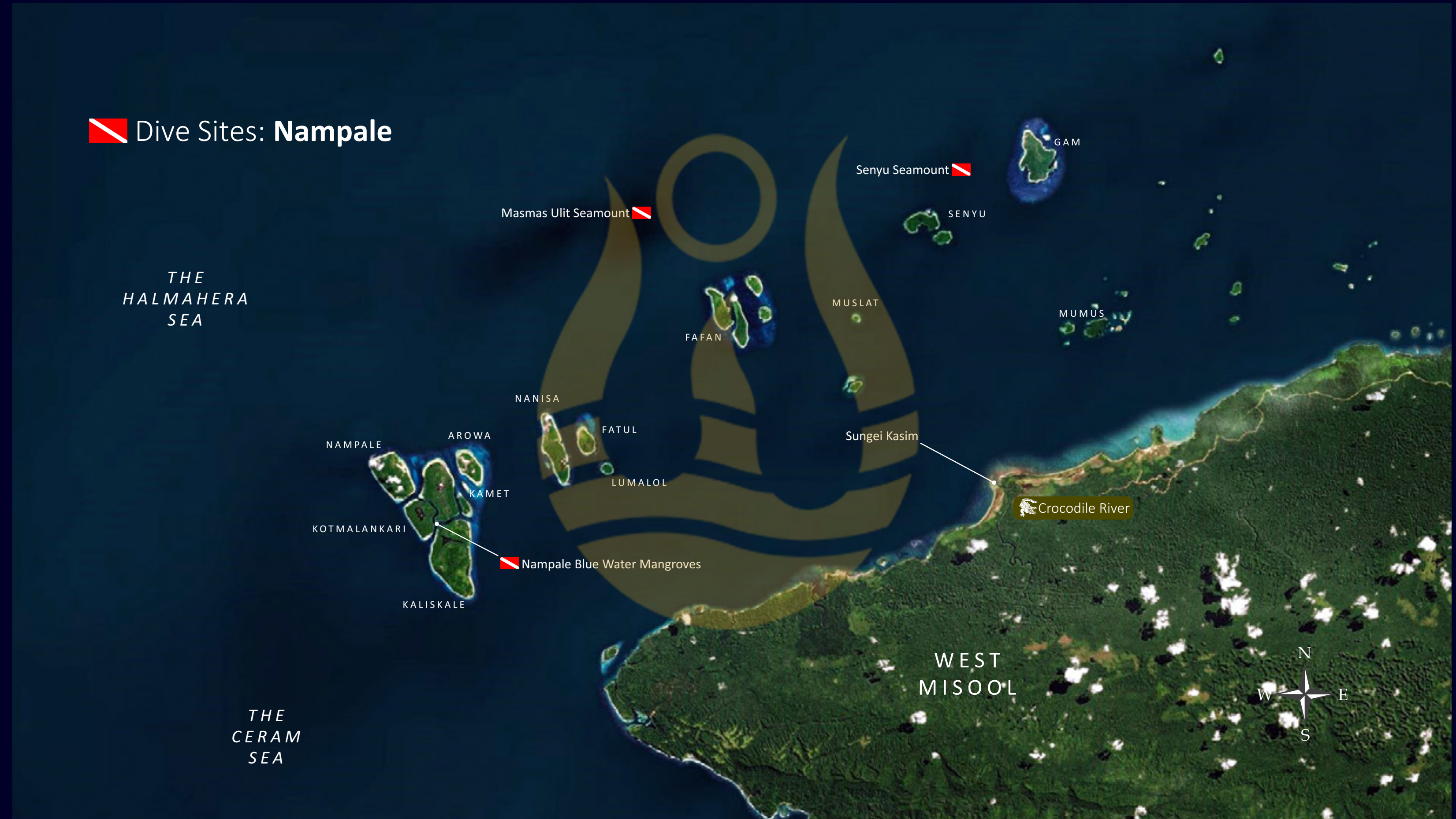


MISOOL - PISANG ISLAND - ORANG KAYA - THE PANTINTI STRAIT - MAKIAN

Nampale

The Nampale Blue Water Mangroves are the main focus for visitors that venture up to this remote corner of north-west Misool. The clear water channels that cut through the mangrove forests hide a wealth of marine life as well as provide a very special underwater experience. Not unlike diving in a very colourful and clear river, the coral reefs meet the mangroves to produce a unique marine environment.

Undocumented islands and reefs further north-east offer ample opportunity for the discovery of new dive sites in this underexplored region. The Senyu and Masmal Ulit seamounts, which have been on the radar for some time, are two that have undergone some exploration. Both are sprawling coral-topped deep reefs covering large areas that literally buzz with marine life.





MISOOL - PISANG ISLAND - ORANG KAYA - THE PANTINTI STRAIT - MAKIAN

Pisang

Surrounded by crystal-clear waters teeming with marine life, Pisang Island is located out in the Halmahera Sea midway between Misool and Orang Kaya. The island has a circumference of nearly five nautical miles and rises steeply from deep water to an elevation of nearly 400 metres. It is richly coated in dense forest, uninhabited, and features a few small, isolated sandy coves.

This remote and pristine location is a hidden gem for scuba diving enthusiasts and renowned for its vibrant marine biodiversity and unspoiled coral reefs. The underwater world around Pisang Island offers a kaleidoscope of colours, with healthy coral reefs forming the backbone of its ecosystem. The island's dive sites are home to an impressive array of marine species, including reef sharks, turtles, barracudas, dogtooth tunas, Spanish mackerel, humphead parrotfish, Napoleon wrasse, rainbow runners, and schools of vibrant fish such as butterflyfish, angelfish, and anthias. However, it is the sites around the



 Dive Sites: **Pisang**





MISOOL - PISANG ISLAND - ORANG KAYA - THE PANTINTI STRAIT - MAKIAN

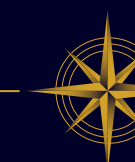


smaller offshore islands that are the main points of interest for scuba divers.

On the south-east side, there is Small Banana, also known as Pisang Kecil. Marked with a lighthouse, this site comprises a very fishy reef that runs to a current-swept point that attracts a lot of schooling fish and some bigger visitors too.

The islands of Ayu Intan and Lampu Mata, on the north-west side and also known as Bananarama, are a great favourite with divers. Underwater, these two are connected by a deep ridge reef that is covered with extremely vibrant hard and soft corals. Lampu Mata features a deep wall on the east side that leads to a stunning underwater rock feature and a pretty hard coral garden. In between are two shallow canyon swim-throughs, and extending to the west is a rocky shallow reef that attracts a lot of schooling fish.

Over on the big island, macro enthusiasts will also find plenty to marvel at. The fringing reefs and points provide habitats for nudibranchs, pygmy seahorses, and other fascinating animals. On the north-facing shoreline there is a large bay that is certainly worth exploring. This has a watercourse flowing into it from the island's high peaks, one of the essential criteria for a stellar critter dive site.






MISOOL - PISANG ISLAND - ORANG KAYA - THE PANTINTI STRAIT - MAKIAN

Orang Kaya

Scuba diving at the Orang Kaya island collection, is a rare and exhilarating experience for divers looking to explore untouched waters filled with vibrant marine life. Located close to the southeastern corner of Halmahera, this group of islands and reefs remain largely undiscovered, making it an ideal destination for those seeking pristine underwater environments. The island's surrounding waters boast excellent visibility, healthy coral reefs, and a diverse range of marine species, making it a dream destination for underwater adventurers.

The dive sites around Orang Kaya feature a mix of dramatic drop-offs, coral-covered slopes, and sandy seabeds rich with macro life. The thriving reefs are home to an abundance of tropical fish, including schools of fusiliers, sweetlips, and angelfish. Larger pelagic species such as reef sharks, barracudas, and eagle rays are also commonly sighted, while macro enthusiasts can find nudibranchs, seahorses, and cuttlefish



 Dive Sites: **Orang Kaya**





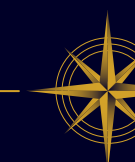
MISOOL - PISANG ISLAND - ORANG KAYA - THE PANTINTI STRAIT - MAKIAN



hiding among the corals. The island's nutrient-rich currents attract migratory species, offering divers a chance to encounter rare marine life in its natural habitat.

For divers interested in adventure and exploration, a short distance to the south-east of Orang Kaya is Karang Batu Anyer. At first glance this looks much like any other remote offshore reef in the seas of Indonesia. However, on closer inspection of satellite imagery, it becomes quite apparent that the elongated, surface-breaking, curved reef is in fact part of the caldera of a long-extinct volcano. Completely circular, and with a diameter of 600 metres, this looks to be a location that definitely warrants further attention.

The Orang Kaya region's isolation means fewer divers and a more exclusive experience, allowing for uninterrupted exploration of its underwater treasures. Whether you are a seasoned diver looking for thrilling drift dives or a photographer in search of stunning reefs, Orang Kaya offers an unparalleled diving adventure in one of Indonesia's most untouched marine environments.





MISOOL - PISANG ISLAND - ORANG KAYA - THE PANTINTI STRAIT - MAKIAN

Ganone

The tiny island of Ganone lies on the north-west side of the Orang Kaya group of islands and waterways, close to the south-eastern tip of Halmahera. Surrounded by deep water, the dive sites around the island feature a mix of coral gardens, steep walls, and sandy slopes teeming with marine biodiversity. Schools of fusiliers, snapper, and batfish swirl around the reefs, while moray eels, cuttlefish, and colourful nudibranchs inhabit the sandy slopes and corals

Larger marine species such as reef sharks, eagle rays, and even the occasional manta ray can be spotted gliding through the deeper waters. The island's underwater terrain also makes it a great location for both macro photography and wide-angle shots, capturing everything from tiny critters to expansive coral landscapes.

 Dive Sites: **Ganone**





The Pantinti Strait

Diving in the Pantinti Strait, Indonesia, is an extraordinary experience for those seeking vibrant marine biodiversity, strong currents, and dramatic underwater landscapes. Located in North Maluku, the strait separates the islands of Halmahera and Bacan, creating a dynamic marine environment shaped by the powerful flow of nutrient-rich waters. These currents bring an abundance of marine life, making the Pantinti Strait an exciting destination for divers who enjoy high-voltage dives and pelagic encounters. With a collection of islands blocking and confusing the currents in the middle, the strait is always going to produce absolutely stellar dive sites, much like a mini Komodo or Alor.

The underwater topography at Pantinti is incredible, featuring steep walls, coral-covered pinnacles, canyons, passages, and sloping reefs teeming with marine life. Divers can expect to see large schools of barracuda, tuna, and trevallies patrolling the deep blue, while reef





MISOOL - PISANG ISLAND - ORANG KAYA - THE PANTINTI STRAIT - MAKIAN



sharks and eagle rays glide effortlessly through the currents. There are also quiet coves and corners around the complex coastline of the islands featuring healthy and vibrant coral formations. These support an array of smaller creatures such as nudibranchs, ghost pipefish, and pygmy seahorses.

The remoteness of the region means fewer divers, providing an exclusive and pristine underwater experience. Whether you are seeking adrenaline-filled drift dives or mesmerising marine encounters, the Pantinti Strait offers some of the best diving in Indonesia.





Makian

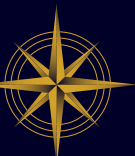
Critter diving at Makian Island, located on the western seaboard of Halmahera Island, offers an incredible experience for macro photography enthusiasts and underwater explorers. Unlike traditional coral reef diving, critter (or muck) diving focuses on the sandy, silty, or rubble-strewn seabed, where bizarre and cryptic marine creatures thrive.

The island is actually a volcano, and along with its nutrient-rich waters, a little current, and some patchy habitat, creates an ideal environment for rare critters to flourish. Divers exploring Makian's muck sites can expect to encounter a stunning variety of macro life, including flamboyant cuttlefish, mimic octopuses, hairy frogfish, and an array of colourful nudibranchs.

The island's dark volcanic sand provides the perfect backdrop for spotting these elusive creatures, many of which rely on camouflage to blend into their surroundings. Pipefish, mantis



 Dive Sites: **Makian**





MISOOL - PISANG ISLAND - ORANG KAYA - THE PANTINTI STRAIT - MAKIAN



shrimp, and ghost pipefish are also commonly sighted, making every dive a treasure hunt for marine oddities.

What makes muck diving at Makian Island even more special is its relatively untouched and less-visited dive sites. Unlike more famous muck diving destinations such as the Lembeh Strait and Ambon, Makian remains under the radar. With the keen eyes of Dewi Nusantara's expert critter spotters, divers can uncover some of the ocean's most fascinating and peculiar inhabitants, making every dive an adventure filled with unexpected discoveries.

M+O Savarajana

Dewi Nusantara





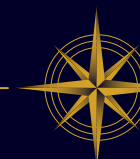
MISOOL - PISANG ISLAND - ORANG KAYA - THE PANTINTI STRAIT - MAKIAN

Cruise Notes

- The suggested itinerary is not fixed. During the cruise, the captain and cruise director assess the prevailing sea, weather, and tide conditions. Where possible, our guest's preferences for certain dive sites will be taken into account.
- The locations included in this itinerary are by no means the only points of interest along the route. There are many more anchorage and activity options available.
- The destinations and anchorages in this presentation are not necessarily in the order the cruise might follow. They are there solely to make the routing easier to understand.
- At times, guests may wish to stay longer at certain anchorages to fully take advantage of what is on offer in that area. The captain and cruise director have discretion over this as long as it fits within the cruise timeline.
- Between anchorages, there can be longer passages, mostly undertaken during the night.
- Aside from the arrival and departure destinations, our itineraries avoid densely populated areas and busy ports.
- Some of these anchorages offer a variety of activities besides scuba diving and snorkelling, such as kayaking or SUP/paddle boarding. Occasionally, we offer village and cultural visits along with other wonderful topside attractions.



Dewi Nusantara





Dewi Nusantara

G O D D E S S O F T H E A R C H I P E L A G O

RAJA AMPAT - MISOOL & SOUTH-WEST HALMAHERA

www.dewi-nusantara.com : sales@dewi-nusantara.com

Designed, written and produced by Garry Bevan

Some parts of this itinerary have been adapted from "Exploring Raja Ampat", available at Amazon.com

Dewi Nusantara: Raja Ampat - Misool & South-West Halmahera. February 2025. (Sorong to Ternate)

© PT Dewi Nusantara/CTDL Ltd. © Ultimate Indonesia

28/02/25

